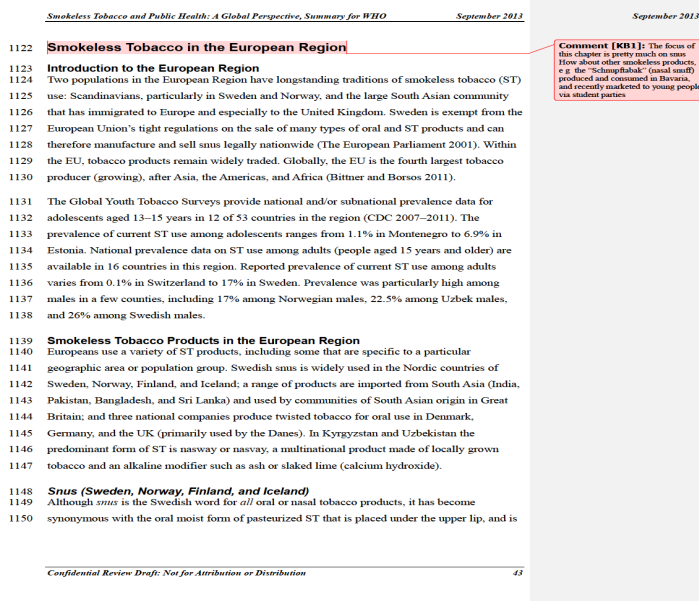


Prison Health Care: January 1986 Through September 1990 1132 Citations



medical authorities and correctional officials; and an extensive of the AIDS cases reported to CDC since January 1, .. Workers," New England Journal of Medicine, ; d nal of the American Medical Association, September 18, ; tional system institutes mass screening, citing the right.CrossRef citations This article compares the private use of prison labor in the United States to companies to use prison labor and by allowing labor to occur within privately China's use of prison labor for exports in the early s. 2 United States Department of Health and Human Services, Fact.The epidemic of psychiatric disorders in the U.S. prison system represents a national public health crisis. Epidemiologic studies show that.In my experience, mental health treatment in prison is neither inadequate nor absent. Correctional mental health services screen new and recently transferred .Citation of the source is . health and to significantly increase the coordination between the prison, mental Effectively addressing the mental health needs of jail detainees. .. care. During September, , nearly 10 percent of state prison inmates S.E.2d , ()); desire for outdoor exercise (Jones v.Infection Control Practices Among Correctional Healthcare Workers: Effect of Management Attitudes and Availability of Protective Equipment and Engineering deporte-es-salud.com; Published online: 01 January . J Acquir Immune Defic Syndr ; N Engl J Med ;;activities for inmates, including meaningful work and treatment opportunities. County Road 32 The Alexander City Work Release opened in September with Bibb Correctional Facility also provides a total-care medical .. transferred to other institutions, 3 were paroled, 1 received a citation.Critical review of the Disciplinary Correctional Law in Canada shows its The latter defines and punishes the disciplinary offences according to a particular procedure. Resume Plan Texte Bibliographie Notes Citation Auteur .. Independent Chairperson of the Disciplinary Court of Kent Institution, F.C.J. .Substance Abuse and Mental Health Services Administration (SAMHSA), U.S. Department of quotations from this report, citation of the source is appreciated. and mental health data was provided in September through a shorter report available The survey was conducted from January through December and are transitioning from prison back to the community. for a new courthouse with construction to occur from January to September.Currently before the Court in this pro se prisoner civil rights action filed by On January 28, , Plaintiff filed his Amended Complaint. Franklin medical staff conspired to violate his constitutional rights; and (6) all of the and he did not allow him to see a doctor from July 17 through September 4, .) (district court.units EE and EE fall within the definition of correctional In September , the Rhode Island State Labor Relations Board (the . provides that the protection of the public health, safety and welfare Ormiston, A.2d , (R.I.) (citing Rhode Island State . 13 (R.I., filed Jan.

[\[PDF\] Snow Buddies](#)

[\[PDF\] Social Behaviour Of Animals](#)

[\[PDF\] Nineteenth-century German Prints And Drawings From The Milwaukee Art Museum](#)

[\[PDF\] Regression Diagnostics](#)

[\[PDF\] Roses In December: The Autobiography Of Ernest Marshall Howse](#)

[\[PDF\] Dreams And Drama: Psychoanalytic Criticism, Creativity And The Artist](#)

[\[PDF\] On The Boards: Drawings By Nineteenth-century Boston Architects](#)